

LIBERVIT

ORANGEline



Made in France

rescue & entry tools' world leader



LIBERVIT is a FRENCH company manufacturing hydraulic tools for firefighters, the police and the army for over 20 years.

Since 1993, LIBERVIT studies, develops and realizes tools to enable extrication & rescue excavation operations carried out by public or private rescue agencies such as the firefighters, the civil protection etc.

Throughout these years, we had to innovate and try to provide effective solutions to the various problems that were submitted to us. Over time, we built a reputation for seriousness, quality and efficiency which brought us to be present today, over all five continents.

Quality and Reliability

LIBERVIT is committed to providing spare parts for each of its tools for a minimum of 10 years from delivery date.

All products are in compliance with the **CE** standard.

Except special mention, our equipment are guaranteed for a period of 3 years from shipment day.

Our entire organization, from engineering to customer service, is certified ISO 9001.

Our products are subjected to a large number of rigorous tests and controls before each shipment.

This ensures that all the tools and accessories we make, have a high level of quality, a long service life, as well as a total reliability.



LP30 heavy-duty work unit



◇ Powerful and light, the LP30 heavy-duty work unit is regularly used to extricate victims from traffic accidents.

- GHP
- BP2
- E300
- VT500.9/4
- LF6
- CLE/BP2
- CLE/E300.VTR
- hydraulic power unit
- hydraulic cutter
- hydraulic spreader
- telescopic jack & R23 - extension
- hydraulic hose
- cutters' backpack rack
- spreader's backpack rack, telescopic jack and its extension

RRU30/70 heavy-duty work unit and extrication units



Self-powered and versatile, the RRU30/70 heavy-duty and extrication unit gives the possibility to access directly the intervention site.

- LP30 - heavy-duty work unit
- VE70-L - high performance hydraulic door opener
- R150 - VE70-L extension
- STVR150 - VE70-L transport bag



◇ This dorsal extrication unit has been developed for the needs of rescue teams working in confined environments (tunnel, underground car park, rescue excavation,..) or when emergency vehicles cannot get close to victims (Multiple crash, ravine accident, railway accident, plane crash, structures collapse: scaffolding, bleachers...).

LP30 heavy-duty work unit

Unit composition :



GHP hydraulic power unit



LF6 hydraulic hose



E300 spreader,
VT500.9/4 telescopic jack & R23 extension
on CLE/E300.VTR backpack rack



BP2 hydraulic cutter
on CLE/BP2 backpack rack



> With the RRU30/70 self-powered & versatile unit you not only have an autonomous extrication unit the LP30, but also a safe and efficient hydraulic door opener, the VE70/L.

In the event of fire, the VE70-L safely and remotely opens any type of doors (simple, high resistance, armoured) and thus, avoid any dangerous backdraft for the rescuers.

RRU30/70 heavy-duty work unit and extrication unit

Unit composition :



GHP hydraulic power unit



LF6 hydraulic hose



BP2 hydraulic cutter
on CLE/BP2 backpack rack



spreader - E300,
telescopic jack - VT500.9/4 & extension - R23
on backpack rack - CLE/E300.VTR



door opener jack - VE70-L
& extension R150
in transport bag - STVR150

◇ GHP - hydraulic power unit



The GHP hydraulic power unit powers all of the LIBERVIT rescue tools to give the rescuers the freedom to easily move about in difficult environments.

The hydraulic power unit GHP is equipped with a watertight lithium battery providing up to 45 minutes in action. The battery can be replaced in seconds without tools to allow operations to continue without any loss of time. The charge level is given at any time by a digital gauge doubled by a warning light signal indicating the need to replace the battery or to recharge it. It is equipped with a 1.5 m hydraulic hose.

Once positioned, the GHP can be remotely controlled to keep the operator at a safe distance from any potential risk. The convertible wired radio-controls, ref. cMPrf are delivered in series with the hydraulic GHP. The set consists of a hand radio control, a foot pedal and a power cable.

The range of the wireless remote control is 30 m The length of the wired remote control : 5 m
Optionally, the GHP hydroelectric unit can be delivered in a transport PELICASE.

Technical data

Operating pressure	300 bar
Hydraulic hose included on GHP	1.50 m - 3 ft
Autonomy in action	45 minutes
hand remote control	qty 1
Foot pedal control	qty 1
PELICASE transport case	optional, ref. VDT1
Dimensions	500 x 240 x 260 mm - 20 x 9.5 x 10 inch
Weight	16 kg - 35 lbs

◇ LF6 - hydraulic hose



The LF6 hydraulic hose is the intended feed for all the LIBERVIT ORANGEline tools. This hose benefits of the patented technology «Hydrolec II» allowing both oil and electricity in one single connection. It is possible to connect two hoses end-to-end and thus obtain a greater length.

Optionally, a protective cap to protect the hydraulic coupling. (ref. BF & BM)

Technical data

Length	6 m - 20 ft
Weight	3.5 kg - 8 lbs
Protective cap	optional, ref. BF & BM

◇ BP2 hydraulic cutter



The BP2 hydraulic cutter has a pair of long curved blades ideal for cutting metals such as vehicles chassis or hollow round tubes.

The curved blades are ideal to cut through bars close to a bay window without the risk of breaking the glass. At the point closest to the blades' axis it is possible to cut a solid 25mm round bar, perfect for cars, trains or planes' victims rescue.

Optionally, the BP2 hydraulic cutter can be delivered in a transport PELICASE or on a carry rack.

Optionally, a protective cap to protect the hydraulic Coupling (ref. BF).

Technical data

Maximum blade opening	140 mm - 6 inch
Maximum cutting force	400 kN
Cutting capacity	Ø 25 mm - Ø 9.5 inch
Dimensions	660 x 250 x 220 mm - 26 x 10 x 9 inch
Weight	11.6 kg - 26 lbs

◇ E300 hydraulic spreader



The E300 spreader is often used to space bars, open shutters and some pulling doors as well as perform other heavy-duty work. Longer arms are also available with the E500 spreader.

The E300 hydraulic spreader can be delivered in a transport PELICASE or on a carry rack.

Optionally, a protective cap to protect the hydraulic coupling. (ref. BF).

Technical data

Maximum arm opening	288 mm - 11 inch
Maximum spreading force	84 kN
Dimensions	560 x 270 x 170 mm - 22 x 11 x 7 inch
Weight	13 kg - 29 lbs

◇ VT500.9/4 - telescopic jack



The VT500.9/4 is a 2 stages telescopic jack usually dedicated to rescue trapped people from under a collapse structure. It can also be used to spread open bars, lift metal shutters, push heavy object to make way.

The VT500.9/4 has integrated check valves into the service handle, which means it can be left at its maximum charge pressure and be disconnected from the feeding hose without any risk.

The R23 offers an 230 mm extension.

Optionally, the VT500.9/4 telescopic jack can be delivered in a transport PEICASE or on a backpack rack. Optionally, a protective cap to protect the hydraulic Coupling. (ref. BF).

Technical data

First stage push force	100 kN
Second stage push force	49 kN
Jack stroke's length	380 mm - 1.2 ft
Retracted length	480 mm - 1.5 ft
Deployed length	860 mm - 2.8 ft
Dimensions	480 x 78 x 240 mm - 19 x 3 x 10 inch
Weight	10 kg - 22 lbs
R23 extension	yes
Dimensions	230 x 50 mm - 9 x 2 inch
Weight	1 kg - 2 lbs

> CLE - backpack rack



LIBERVIT tools can be adapted on our modular carry racks.

The LIBERVIT carry racks are made of black epoxy painted aluminium. They are fitted with large adjustable shoulder straps and an abdominal one to give stability and comfort during transport.

Each carry rack has its own straps and support adapted to the tools.

Technical data

Cutter's backpack rack	ref. CLE/BP2
Spreader & jack's backpack rack	ref. CLE/E300.VTR
Backpack harness	black, orange & yellow
Transport handle	tubular webbing with rubber grip
Material	black powder coating aluminium
Adjustable straps	yes
Dimensions	590 x 360 x 200 mm - 23 x 14 x 8 inch
Empty backpack rack weight	4 kg - 9 lbs

◇ VE70-L - high performance hydraulic door opener jack



In its standard version, the VE70-L door opener jack opens inward opening armoured multi-point doors and fitted with the option-T outward opening metal doors.

A quiet, simple and fast implementation for a door opening in less than 20 seconds and in a single operation.

Three extensions complete the set. These accessories can be used to deal with exceptional situations such as the presence of one or more steps in front of the door.

The upper support plate is removable manually. As an option, there are different types of base plates.

Opening is done gradually, without impact, in perfect silence, regardless of the implementation mode: remotely or through the service handle switch on the tool.

Rubber stoppers placed on the tool at specific points reduce the risk of noise when carrying or implementing the tool.

To ensure complete operator safety in any high-risk situation (Backdraft, etc..) once the Door Raider light is implemented it can be remotely actioned via a radio-control.

The controls can operate in radio control mode at an average distance of 30 m, or in wired mode, at a distance of 5m, the power cable is common to the 2 remote controls, the remotes are linked to the GHP hydraulic power unit.

◇ VE70-L - high performance hydraulic door opener jack



Tests on high resistance type doors:

- Fichet G375 - French **12-locks** door, ranked level 5 (maximum rating), in compliance with NF P 20.320 standard.
- Fichet Forstyl HiS A2P BP1 - A2P3 ★★ - **5 locking points**.
- Sherlock F730 **23 closures** Class 4.
- Sherlock CGU - Czechoslovakian **5-locks**, TUV Class E130 D3 / EW45 D3 standard.
- Daloc S43 - Swedish **3-locks** door, ranked class 3, level 40 in compliance with SS.ENV 1627 & 00-943 certification.

All these doors were opened in less than 20 seconds.

Technical data

push force	71 kN
hydraulic jack length	522 mm - 20.5 inch
VE70-L jack dimensions	1210 x 100 mm - 48 x 4 inch
VE70-L jack weight	12.6 kg - 28 lbs
R150 jack's extension	L 150 mm - 6 inch, 1.2 kg - 2.5 lbs
R300 jack's extension	L 300 mm - 12 inch, 1.8 kg - 4 lbs
R450 jack's extension	L 450 mm - 18 inch, 2.5 kg - 5.5 lbs
PELICASE transport case	optional, ref. VDT2
Case dimensions	1350 x 405 x 170 mm - 53 x 16 x 7 inch
Total case weight equipped	32 kg - 70.5 lbs

LIBERVIT
ORANGELINE

◇ bearing plate SGS1 - VE70-L hydraulic jack's accessory



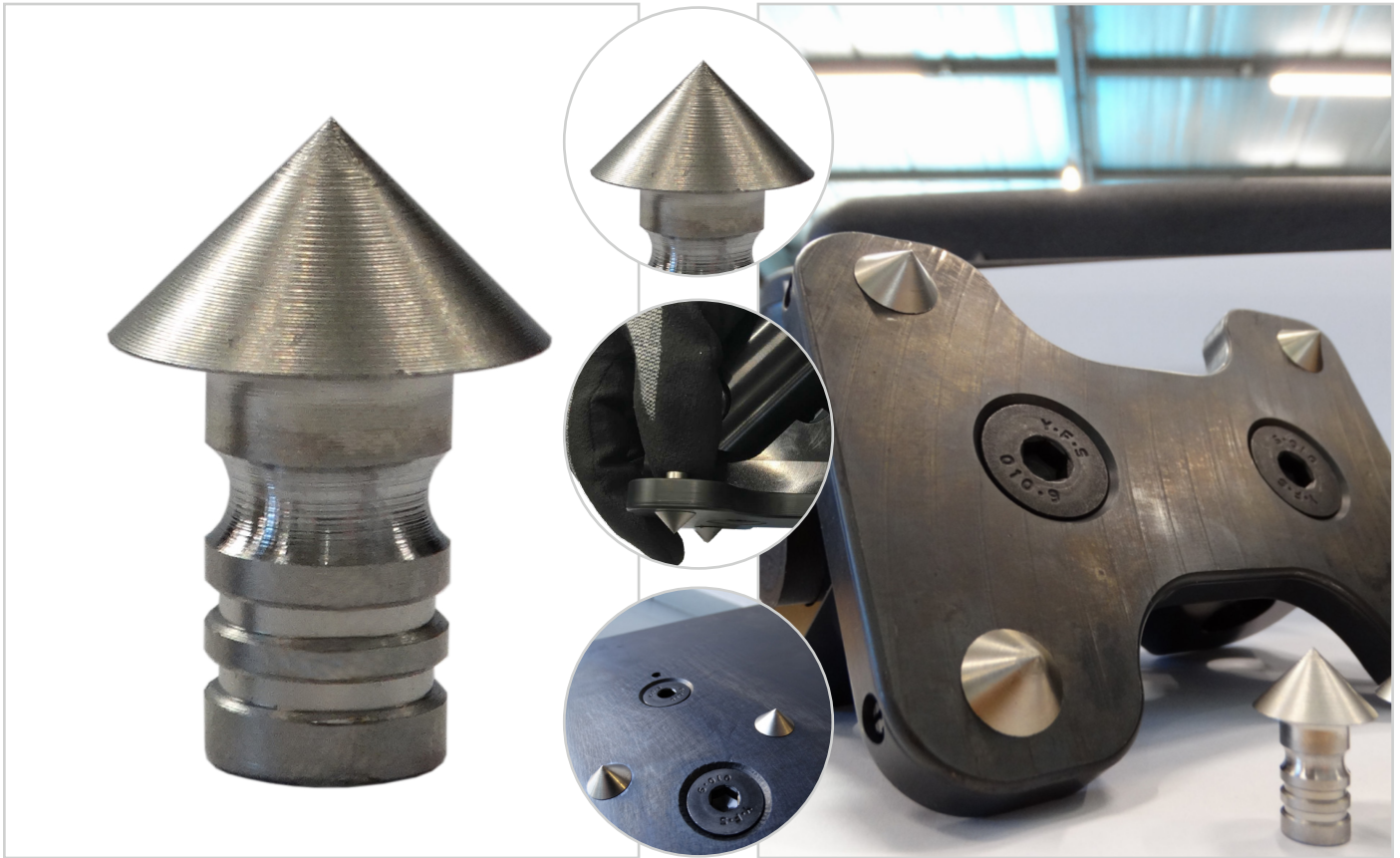
The SGS1 base plate is used to increase the contact surface and thus avoid the risk of going through some wooden or PVC doors. It can also increase support surface on fragile or unstable soils such as: wood flooring, earth, tar..., it offers greater stability and reduces the risk of skidding on the ground.

The SGS1 base plate has 6 high resistance stainless steel anti-slip tips which will need to be sharpened periodically to maintain their non-slip (see sharpening station).

Technical data

Anti-slip tips	qty 6
Material	black powder coating steel
Dimensions	300 x 300 x 8 mm - 12 x 12 0.5 inch
Weight	6.4 kg - 14 lbs

> anti-slip tips TSP1 - VE70-L hydraulic jack's accessory



The VE70-L hydraulic jack effectiveness depends mostly on its lower base plate anti-slip tips adhesion on any type of ground. Both VE70-L hydraulic jack soles are fitted with TSP1 anti-slip tips.

These TSP1 anti-slip tips are made of high resistance stainless steel and can be sharpened. After each VE70-L hydraulic jack use think about checking the TSP1 anti-slip tips to estimate their state of wear and if necessary sharpen or replace them. The anti-slip tips replacement is done after a number of sharpening and/or when they reach a height lower than 18 millimeters.

Technical data

Dimensions TSP1 anti-slip tips

Ø 148 mm x 22 mm - Ø 6 inch x 1 inch

Poids TSP1 anti-slip tips

9 g - 0.3 oz

Number of TSP1 anti-slip tips per bag

qty 4

Suitable to all VE70-L hydraulic jack

yes

◇ sharpening pack - VE70-L hydraulic jack's accessory



For a perfect ground adhesion, the VE70-L hydraulic jack base plate crampons need to be sharpened. The TSP1 anti-slip tips' support respect the original angle and guarantee the sharpening.

The sharpening station TOURET/VE70/EU-015 includes: a stand, 220 Volts Grinder with a grindstone and a TSP1 anti-slip tips' support.

The sharpening stations comes in a solid transport case.

In the case : 1 diamond wheel dresser, 1 Allen key, 1 circlip plier, 1 safety goggles & 1 set of protective gloves.

Technical data

Turnable supply voltage	220 Volts
Disk dimensions	Ø 150 x 20 x 32 mm - Ø 6 x 0.8 x 1.5 inch
Sharpening pack dimensions	410 x 133 x 275 mm - 1 x 1 x 11 inch
Weight	10 kg - 22 lbs
Equipped with case & tools	yes

◇ TTdoor - tactical training door



The LIBERVIT TTdoor is perfect to train professionals in breaching techniques with tools such as rams, levers, VE70-L hydraulic jack, OP55, HR7... as there is no limit to how many times it is used.

Three wood calibrated fuse lock simulators reproduce the resistance of a simple or multipoint door. These wood fuses are set at the central simulator lock giving the best reproduction of a real-life door opening. The TTdoor was designed to give the rescuers a practice tool to test and improve their knowledge and better their techniques and also get the right reflexes to succeed in operation. Collapsible, the TTdoor can easily be carried to other sites.

Technical data

Structure Collapsible	stainless steel
Assembled with high resistance screws	Class 10.9
Number of hinges	4
Number of lock simulators	3
Stainless steel door floor thickness	8 mm - 0.3 inch, colour grey
Dimensions	2280 x 980 x 2119 mm - 8 x 3 x 7 ft
Weight	454 kg - 72 st
Hitting pad	yes, ref. TTpad
Dimensions	250 x 250 x 15 mm - 10 x 10 x 0.5 inch
Weight	2.6 kg - 6 lbs
100 fuses' box	yes, qty 2, ref. LIB15/70



BS3 - sledge hammer



The BS3 ram is used for all operations requiring pounding. The holding handle is insulated according to the NF EN 60900 standard, which allows its use on objects that may possibly be powered up to 1000V AC and 1500V DC. The BS3 & BS5 masses are completely made of steel.

Technical data

Handle	electrical shock's protective coating
Total length	625 mm - 2 ft
Weight	6 kg - 13 lbs



CBT10 - bolt cutter



The CBT10 bolt cutter can be used to cut locks, fences, barbed wires, etc.
The arms' non-conducting coating makes it possible to cut electrical wires or live object.
The arms are isolated according to the NF EN 60900, which allows its use under voltage up to 1000V AC and 1500V DC.

Technical data

Blades	replaceable
Cutting capacity	Ø 10 mm - 0.4 inch max
Handle	electrical shock's protective coating
Total length	627 mm - 2.6 ft
Weight	2.7 kg - 6 lbs



SINGLE HEAD - telescopic lever



The SINGLE HEAD lever is a tool from the manual entry-tools range. It is used to spread partitions, to open light doors, to rip open bolts from locks and padlocks, to lift metal shutters etc.

The SINGLE HEAD is 650 mm long and can extend up to 960 mm, it also has 14 locking positions for all type of access. The 180° indexable head is made of high-resistance steel foundry covered in a black anti-corrosion coating.

Technical data

Retracted length	650 mm - 2 ft
Deployed length	960 mm - 3 ft
Handle Diameter	Ø 32 mm - Ø 1.5 inch
Handle	rubber non electrical shock's protection
Dimensions	650 x 95 mm - 25.5 x 4 inch
Weight	2.2 kg - 4.5 lbs



ACTION2 - double head telescopic lever



The ACTION2 lever is a tool from the manual entry-tools range. With its 180° indexable head lever, it is used to spread partitions, to open light doors, to rip open bolts from locks and padlocks, to lift metal shutters etc.

At the other end, a slightly flattened and split curved stick serves as a fulcrum to pull nails or to be used as a fixed lever. The ACTION 2 is 750 mm long and extends up to 1050 mm.

The 180° indexable head is made of high-resistance steel foundry covered in a black anti-corrosion coating.

Technical data

Retracted length	730 mm - 2.4 ft
Deployed length	1050 mm - 3.5 ft
Handle Diameter	Ø 32 mm - Ø 1.5 inch
Handle	rubber non electrical shock's protectiong
Dimensions	730 x 95 mm - 29 x 4 inch
Weight	2.7 kg - 5.5 lbs



OP55 -lightweight door opener



The OP55 hydraulic door opener ensures the quick opening of inward opening non-armoured doors and also outward by acting as a spreader.

Technical data

Pushing force	59 kN
Jack's extension	140 mm - 5.5 inch
Dimensions	325 x 95 x 232 mm - 13 x 4 x 9 inch
Weight	5.3 kg - 11 lbs
Transport bag	yes, ref. STOP55

OP71 -lightweight door opener



The OP71 opener provides quick opening of unshielded doors opening inwards and outwards, acting as a spreader.

The OP71 gets its stability from its shape and weight, an added value when opening difficult doors.

Technical data

Jack's hydraulic thrust	71 kN / 28 kN
Jack's total length	262 mm - 10 inch
1st stage jack length	151.5 mm - 6 inch
2nd stage jack length	109.5 mm - 4 inch
Dimensions	350 x 120 x 120 mm - 14 x 4.5 x 4.5 inch
Weight	5.9 kg - 12 lbs
Transport bag	yes, ref. STOP7

◇ HR7 - middle range door opener



Designed to open wooden, metal and PVC doors with single or multipoint locks the HR7 is set horizontally between the door's vertical frame.

It is equipped with an exclusive «Extend» quick-release telescopic rod system and can be adjusted lengthwise to reduce exposure time in front of the door.

The average time required to set and open a standard door with 3 points lock is about 30 seconds.

All the control switches are on the tool meaning that the jack can be handled by one person from installation to activation.

A handle on the jack gives a better grip. Two switches on the tool activate the HR7.

To open double swing doors, an extension is provided that is easily fitted in a few seconds.

The extension fits both sides.

To ensure complete operator safety in any high-risk situation (Backdraft, etc..) once the Door Raider light is implemented it can be remotely actioned via a radio-control.

The controls can operate in radio control mode at an average distance of 30 m - 98 ft, or in wired mode, at a distance of 5 m - 16 ft, the power cable is common to the 2 remote controls, the remotes are linked to the GHP hydraulic power unit.

Once the Door is opened and the unlocking push button activated, the tool can be immediately removed.

◇ HR7 - middle range door opener



Technical data

Horizontal jack force	56 kN
Horizontal jack's length retracted	670 mm - 26 inch
Horizontal jack's length deployed	942 mm - 37 inch
Horizontal jack's & R36 extension length	1292 mm - 4.2 ft
Pushing jack force	71 kN
Pushing jack length deployed	288 mm - 11 inch
Handle on horizontal jack	yes
2 control switches	yes
Dimensions	670 x 470 x 100 mm - 26.5 x 18.5 x 4 inch
HR7 door opener weight	13.6 kg - 29.5 lbs
Delivered with 3 sets of plates	yes, ref. PP/HR7, PR/HR7, PRL/HR7
Delivered with extension	yes, ref. R36
R36 extension length retracted	265 mm - 10.4 inch
R36 extension length deployed	347.5 mm - 13.7 inch
R36 extension dimensions	288.5 x 72.5 x 74.5 mm - 11.4 x 2.8 x 3 inch
R36 extension weight	1.6 kg - 3.5 lbs
Delivered in PELICASE transport case	yes, ref. VDT/HR7
Fully equipped case weight	28.5 kg - 62 lbs

LIBERVIT ORANGEline



> QUOTATIONS : quotations@libervit.com



> ORDERS : orders@libervit.com



> AFTER SALES SERVICE : aftersales@libervit.com

We have tried to be as thorough as possible in the making of this document.
However, some information might be incomplete or incorrect. LIBERVIT SAS cannot in anyway be held responsible for any of the consequences these errors could have.
If in doubt about some of the information rightness please contact our communication service through e-mail: communication@libervit.com
This document cannot be reproduced in part or entirely, be edited or distributed to the public without an authorization from LIBERVIT.

With all our thanks to the units authorizing us to use their pictures in this catalogue.
The information in this catalogue is not contractually binding.
With the aim of improving its products, LIBERVIT reserves the right to modify their specifications without prior notice.

COPYRIGHT - All rights reserved. Non-contractual photos
Photo credit : Operation teams | © Yvan Chocloff | LIBERVIT
LIBERVIT communication | communication@libervit.com

LIBERVIT - Espace Polygone - 218 rue Ettore Bugatti - 66000 Perpignan - FRANCE
Phone : + 33 (0)4 68 50 05 25 - Fax : + 33 (0)4 68 66 98 97 - courrier@libervit.com - www.libervit.com



Join our Distributor Network : libervit-distributors.com

Pneumatic Lifting Bags



Land & Underwater
Search & Rescue Solutions



M3863/64 land & underwater heavy duty work & clearing unit



LIBERVIT ORANGE
line

DISCOVER
MOBILITY

Keep control



LIBERVIT
ORANGEline

LIBERVIT MARITIME
RESCUE



ENTER
A NEW ERA

Enjoy a unique experience



 **LIBERVIT**
maritime rescue

LIBERVIT ORANGELine



libervit.com



[LIBERVIT rescue tools](#)



[libervitrescue](#)



[@LIBERVITrescue](#)